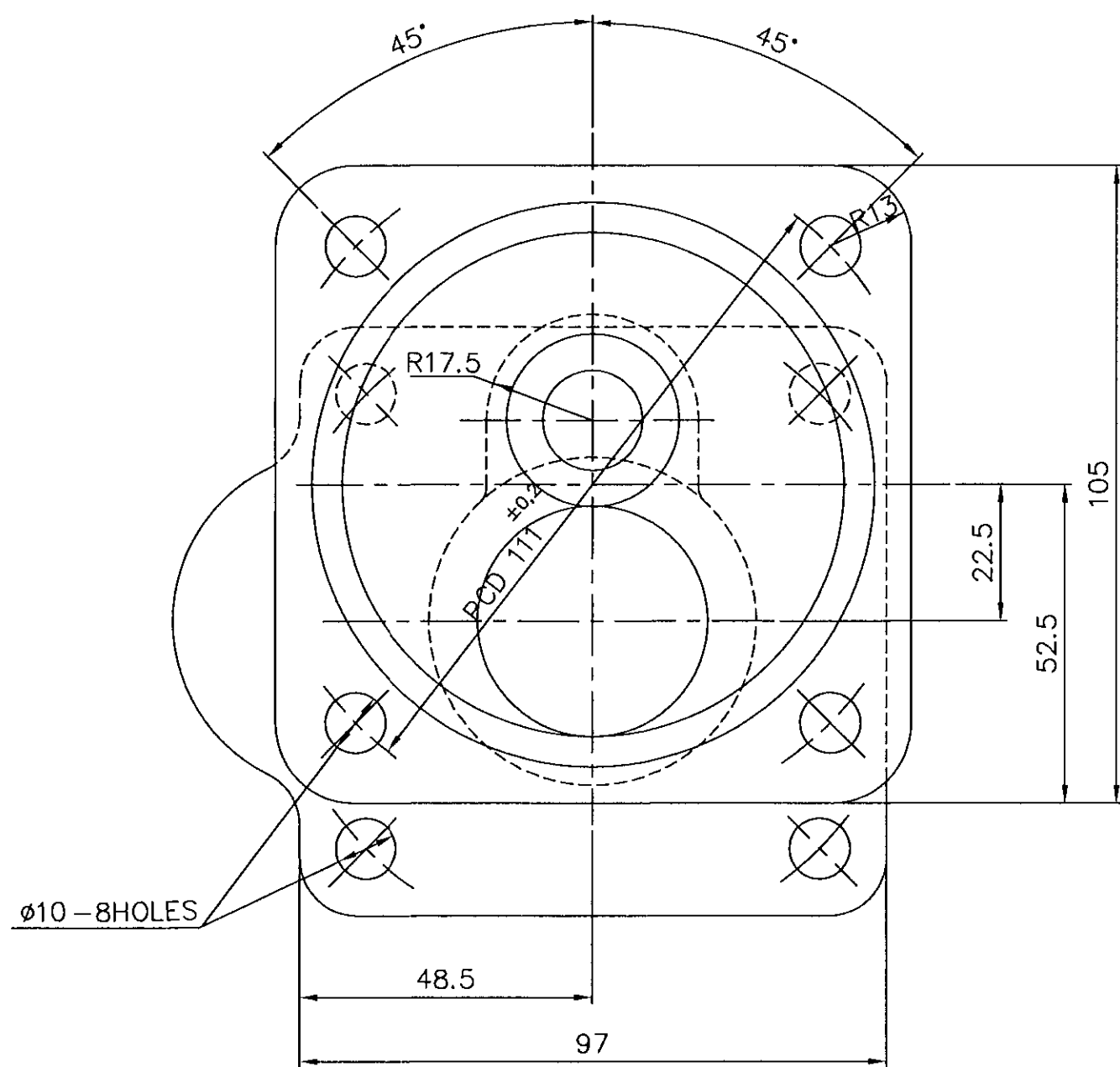






$$\sim \begin{array}{|c|c|c|} \hline 1.6 & 3.2 & \\ \hline \end{array}$$


1. FOR QUALITY REQUIREMENTS REFER LATEST APPLICABLE QUALITY PROCEDURES.
2. USE R4 WHEREVER NOT SPECIFIED TOLERANCE ON ANGLE  $\pm 2 \frac{1}{2}$  M/CING ALLOWANCE TO BE MAX OF 5mm WHEREVER NECESSARY.

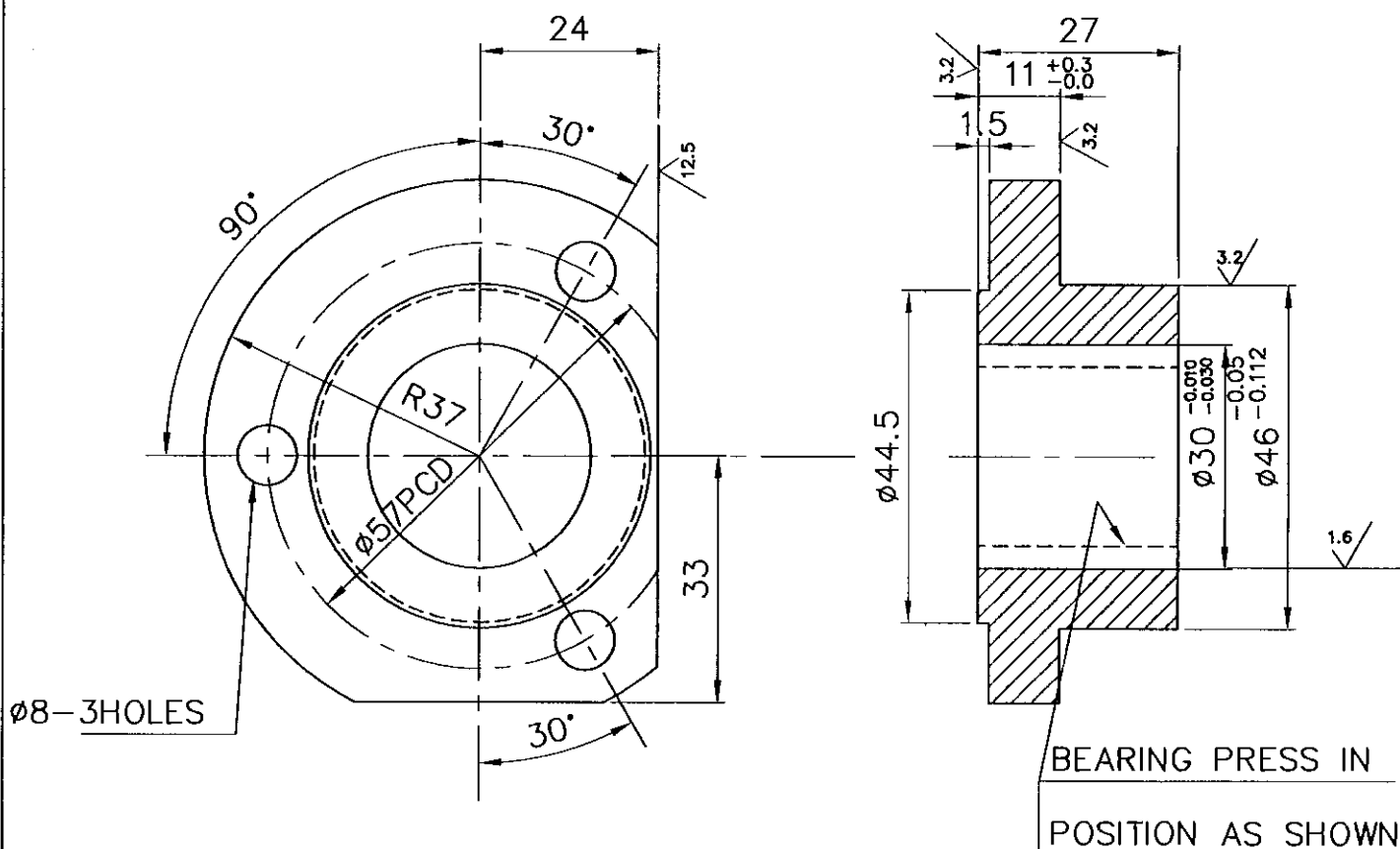
	CASTING	92/005/791	ALUMINIUM LM9			1.250			
No OFF	DESCRIPTION	MATL CODE	MATL SPECN	HEAT TREATMENT	SCRAP SORT	NET WT (kg)	GROSS WT (kg)	DRAWING No	ITEM No
TYPE OF PRODUCT									
OR NAME OF									
CUSTOMER/PROJECT									
 <b>BHARAT HEAVY ELECTRICALS LTD.,</b> UNIT: HIGH PRESSURE BOILER PLANT. TIRUCHIRAPALLI - 620014.					DRN	NAME <i>V. Arumugham.</i>	SIGN	DATE	NO. OF VAR.
					CHD	<i>K. Pritharan.</i>			
					APPD	<i>P. Natarajan.</i>			
DEPT	SB		SCALE	WEIGHT (KG).	REFERENCE INFORMATION				NO. OF ITEMS
CODE	330		NTS	~1,05	L 60378				
TITLE					CARD CODE	DRAWING NO.			REV
SWITCH MOUNT CONNECTOR					U 01	2-20-201-00061			03

**CAUTION:** The information on this document is the property of BHARAT HEAVY ELECTRICALS LTD. It must not be used directly or indirectly in any way detrimental to the interest of the company.

REV 03	DATE 11.06.01	ALTERED CHD & APPD
ZONE	DRG.UPDATED AND REDRAWN.	
	DCN: SB: 1298	

FOR TOLERANCES OF UNTOLERANCED DIMENSIONS DURING MANUFACTURE REFER RELEVANT QCP/QP

REV	DATE	ALTERED
04	11.06.01	CHD & APPD
DRG.UPDATED AND REDRAWN.		
DCN: SB: 1298		


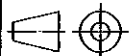
$$\bigcirc (1.6 \bigtriangledown 3.2 \quad 12.5 \bigtriangledown)$$


NOTES: -

1. FOR QUALITY REQUIREMENTS REFER APPLICABLE LATEST QUALITY PROCEDURE.

FOR CASTING DRAWING REFER NO 4-20-201-00736

PART CODE : 842020112600

02	D80X27	16/006/003	ALU. COMM.			16			
01	CASTING	92/005/790	AL.LM9			16			01
NO OFF	DESCRIPTION	MATL CODE	MATL SPECN	HEAT TREATMENT	SCRAP SORT	NET WT (kg)	GROSS WT (kg)	DRAWING No	ITEM No
<div><b>BHARAT HEAVY ELECTRICALS LTD.,</b> UNIT: HIGH PRESSURE BOILER PLANT. TIRUCHIRAPALLI 620014. 365-122</div>					DRN	NAME V.ARUMUGAM	SIGN	DATE	NO.OF VAR
					CHD	K.SRIDHARAN			
					APPD	S.NATARAJAN			
DEPT SB			SCALE	WEIGHT (KG).	REFERENCE INFORMATIONS				NO. OF ITEMS
CODE 330			NTS	0.16					
TITLE				CARD CODE	DRAWING NO.				REV
BEARING CAP				U 01	4-20-201-00200				04

Size A4

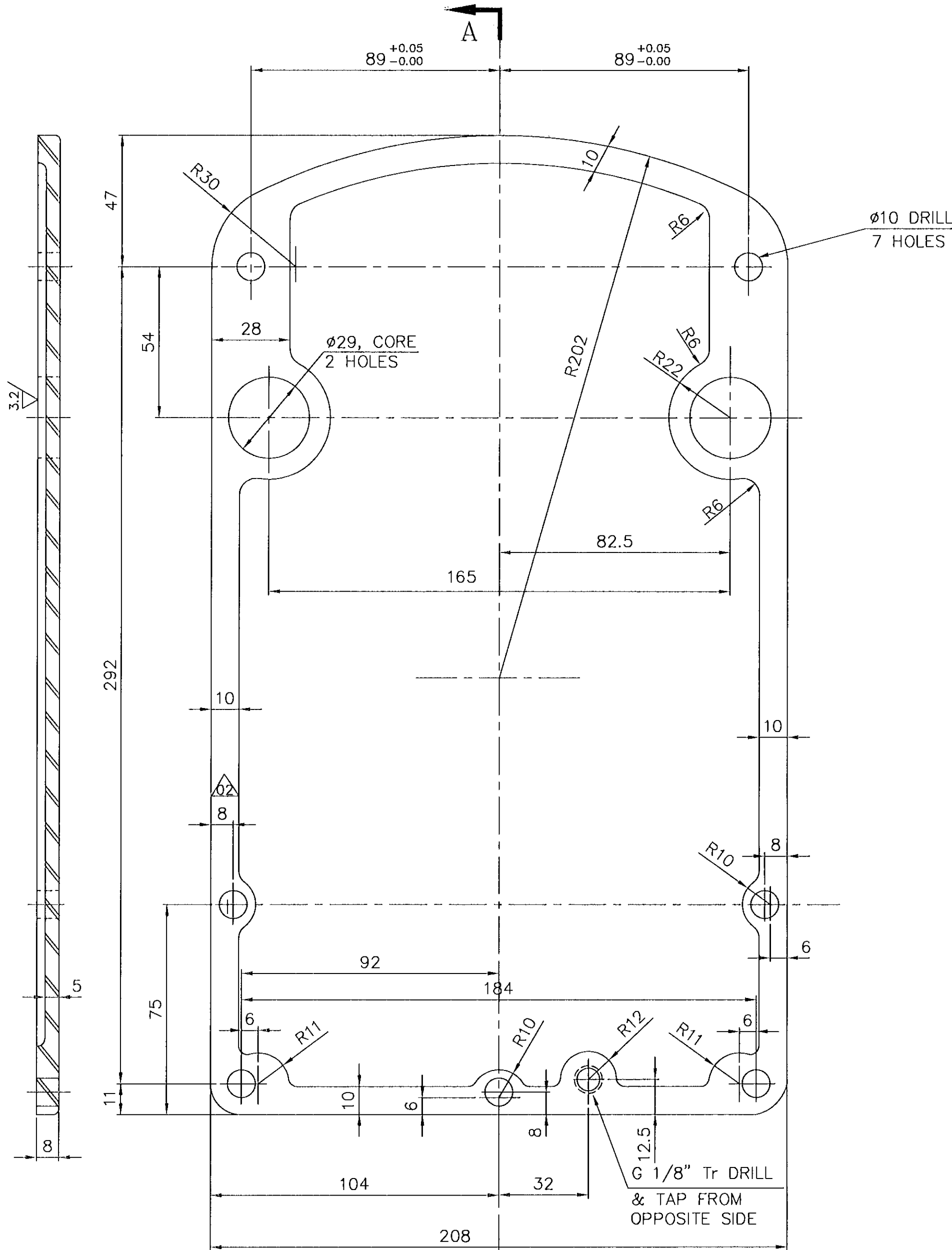
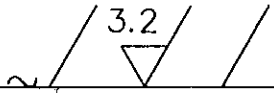
**CAUTION:** The information on this document is the property of BHARAT HEAVY ELECTRICALS LTD. It must not be used directly or indirectly in any way detrimental to the interest of the company.





09000-102-02-2  
DRAWING NO.

ALL DIMENSIONS ARE IN MILLIMETRES. FOR TOLERANCES OF UNTOLERANCED DIMENSIONS DURING MANUFACTURE REFER RELEVANT QCP / QP


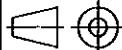


SECTION A-A

NOTE: —

- FOR QUALITY REQUIREMENTS REFER LATEST APPLICABLE QUALITY PROCEDURES.  
M/CING ALLOWANCES TO BE MAX. OF 5MM WHEREVER NECESSARY.

PART CODE : 842020113300

CASTING		92/005/792	ALUMINIUM LM9			1.000			
No OFF	DESCRIPTION	MATL CODE	MATL SPECN	HEAT TREATMENT	SCRAP SORT	NET WT (kg)	GROSS WT (kg)	DRAWING No	ITEM No
TYPE OF PRODUCT OR NAME OF CUSTOMER/PROJECT									
 BHARAT HEAVY ELECTRICALS LTD., UNIT: HIGH PRESSURE BOILER PLANT. TIRUCHIRAPALLI - 620014.					DRN	NAME V. Arumugham.	SIGN	DATE	NO. OF VAR.
					CHD	K. Pritharan.			
365-120					APPD	P. Natarajan.			
DEPT	SB			SCALE NTS	WEIGHT (KG).	REFERENCE INFORMATION			NO. OF ITEMS
CODE	330								
TITLE GEAR BOX COVER					CARD CODE U 01	DRAWING NO. 2-20-201-00060			REV 03

REV 03	DATE 11.06.01	ALTERED CHD & APPD
ZONE	DRG.UPDATED AND REDRAWN.	
	DCN: SB: 1298	

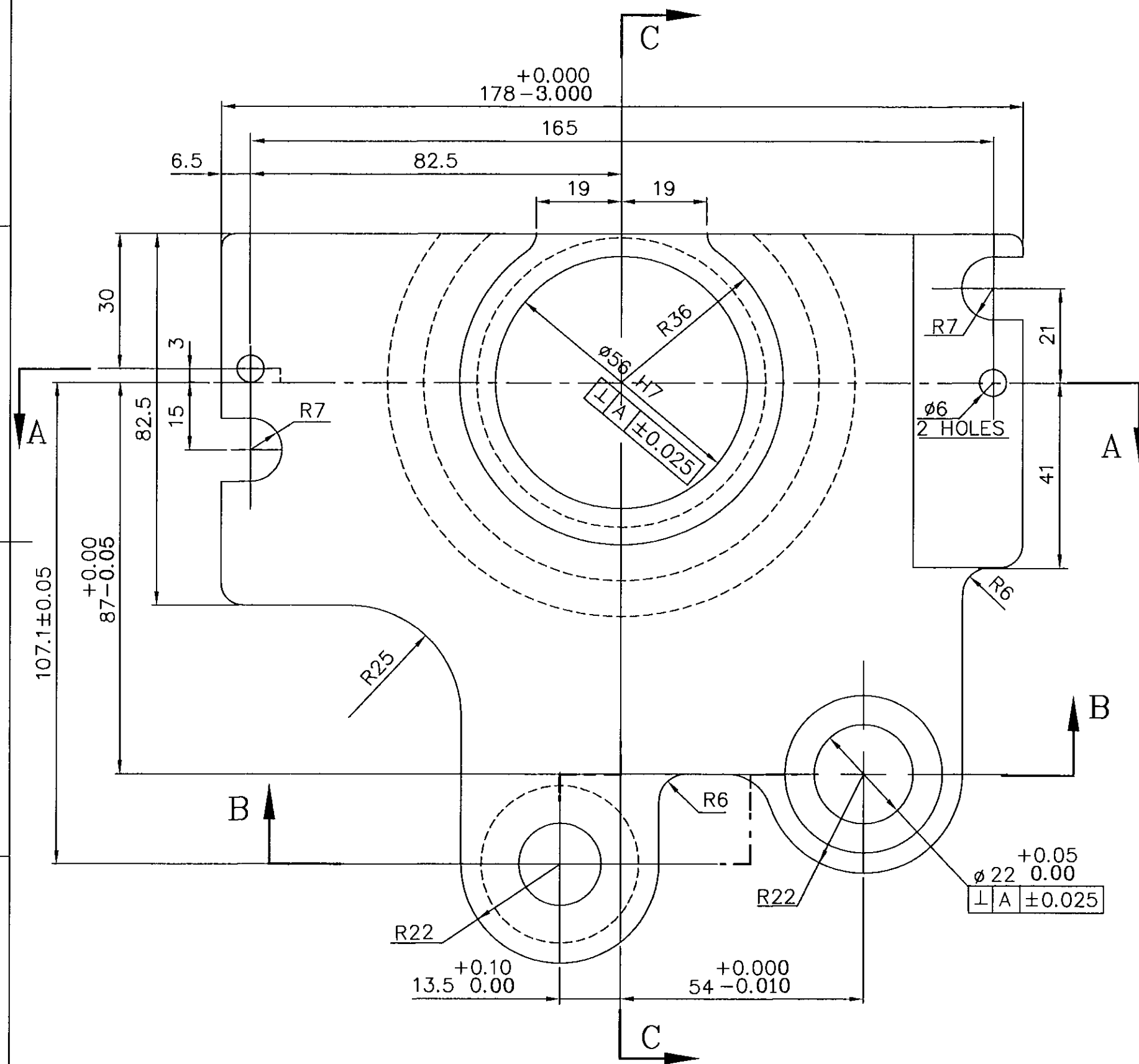
CAUTION: The information on this document is the property of BHARAT HEAVY ELECTRICALS LTD. It must not be used directly or indirectly in any way detrimental to the interest of the company.

69000-102-20-201-00059  
DRAWING NO.

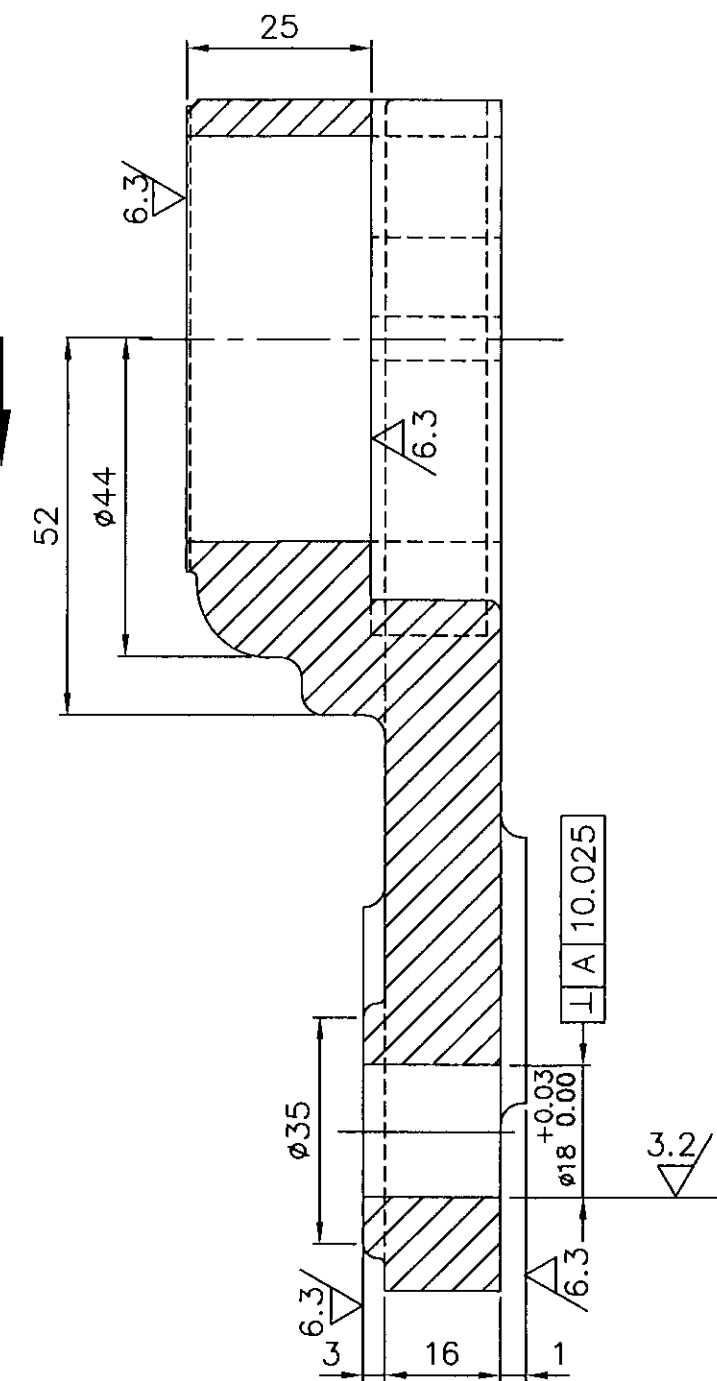
ALL DIMENSIONS ARE IN MILLIMETRES. FOR TOLERANCES OF UNTOLERANCED DIMENSIONS DURING MANUFACTURE REFER RELEVANT QCP / QP

$\nabla/3.2/6.3$

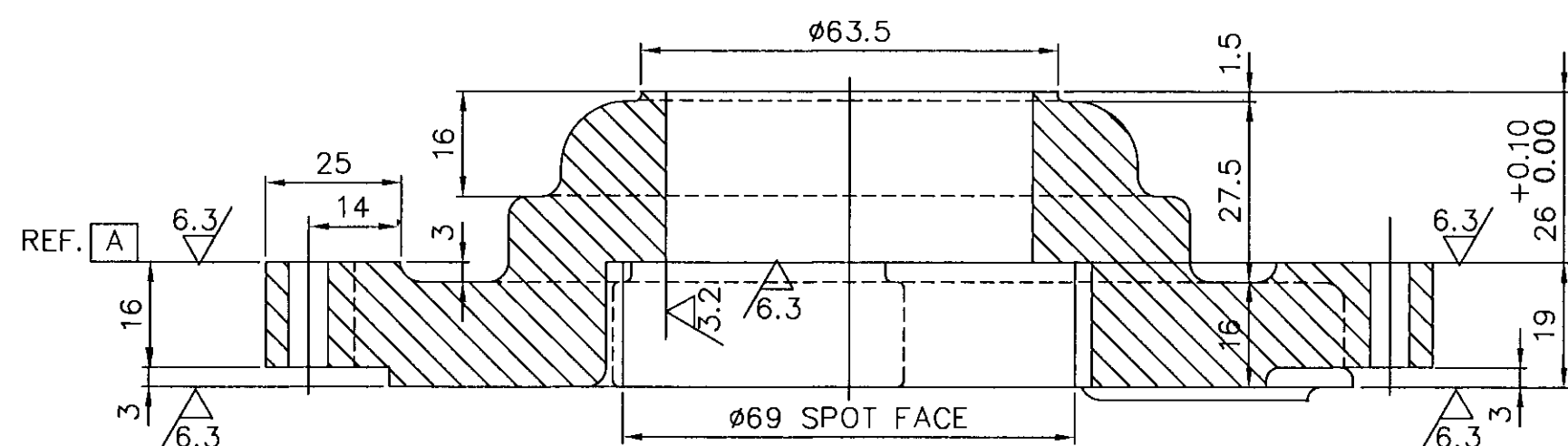
SECTION - BB



SECTION - CC



SECTION - AA



NOTES:

1. CASTING RADII SHOULD BE 3MM WHEREVER NOT SPECIFIED.
2. REFER DRG.NO: 2-20-201-00117 FOR CASTING.
3. FOR QUALITY REQUIREMENTS REFER LATEST APPLICABLE QUALITY PROCEDURES.

PART CODE : 842020113400

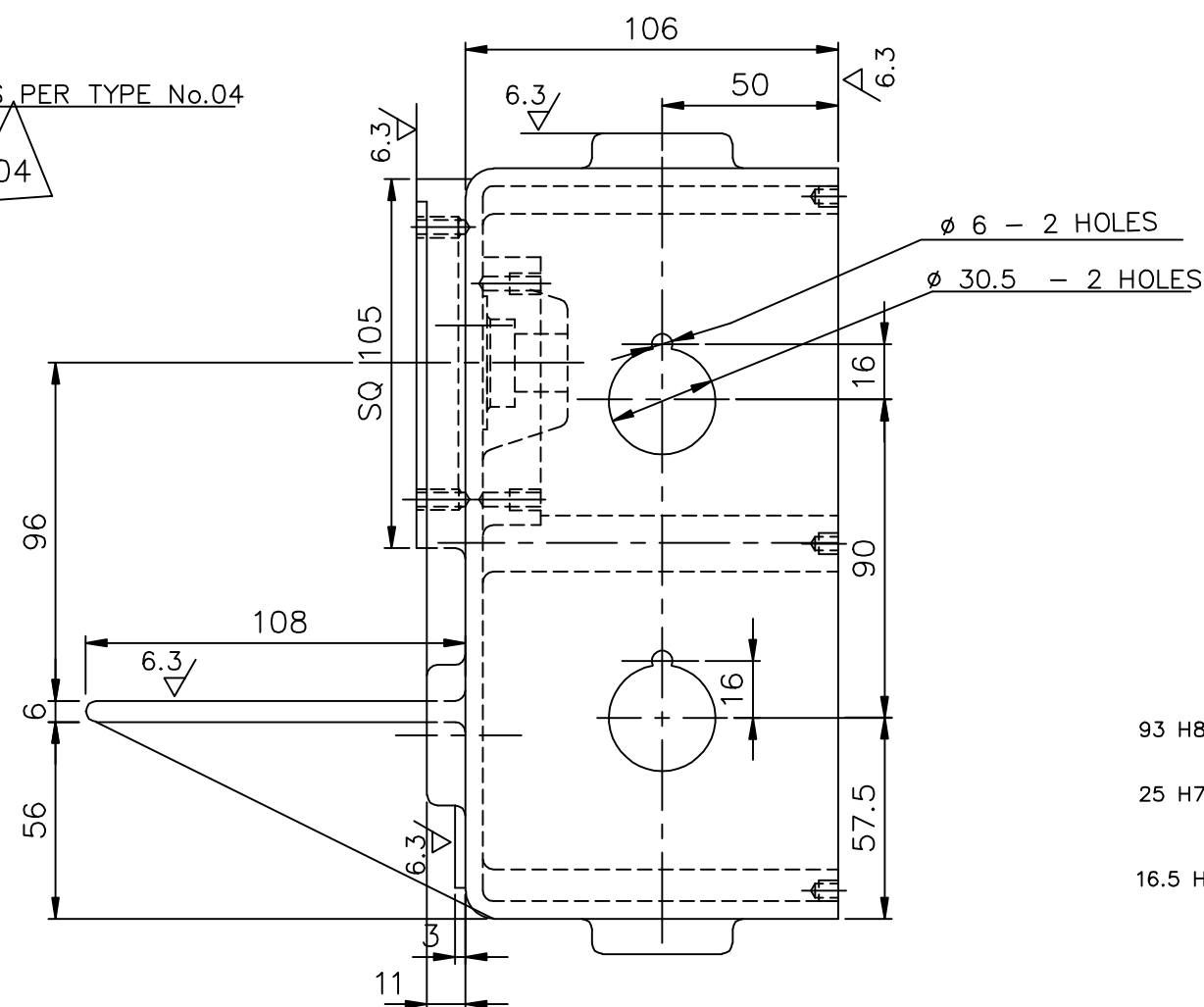
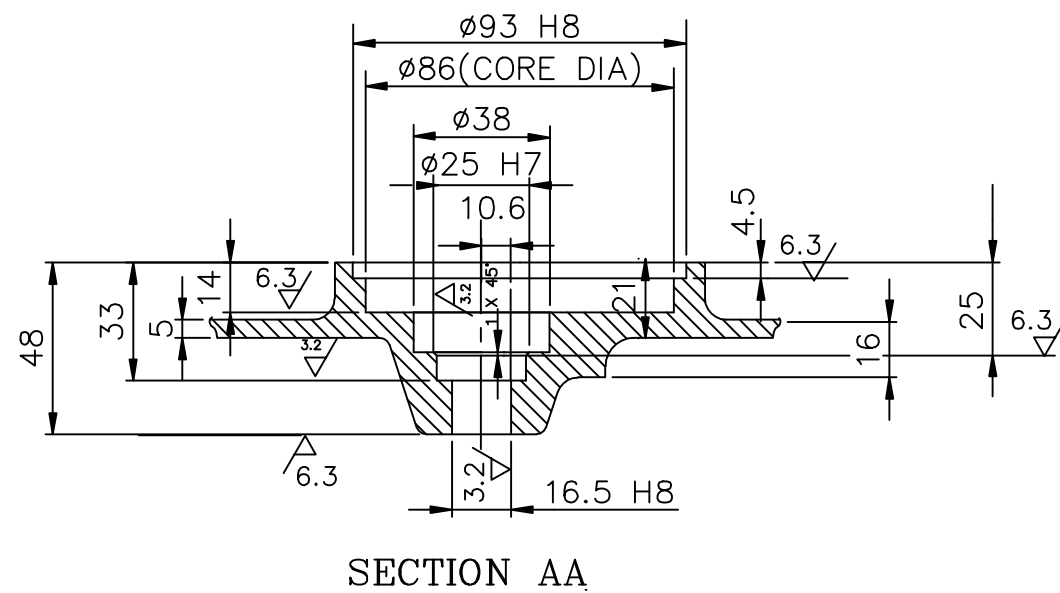
BEARING FRAME	92-026-042	ALUMINIUM LM9	1.030	1
DESCRIPTION	MATL CODE	MATL SPECN	HEAT TREATMENT	SCRAP SORT
NET WT (kg)	GROSS WT (kg)	DRAWING No	ITEM No	

TYPE OF PRODUCT	OR NAME OF CUSTOMER/PROJECT	DRN	NAME	SIGN	DATE	NO OF VAR.
365-120	BHARAT HEAVY ELECTRICALS LTD., UNIT: HIGH PRESSURE BOILER PLANT. TIRUCHIRAPALLI - 620014.	CHD	V. Arumugham			
DEPT	SB	SCALE	WEIGHT (KG).	REFERENCE INFORMATION	NO. OF ITEMS	
CODE	330	NTS	1.030	12759/13		
TITLE	BEARING FRAME	CARD CODE	U 01	DRAWING NO.	REV	
				2-20-201-00059	07	

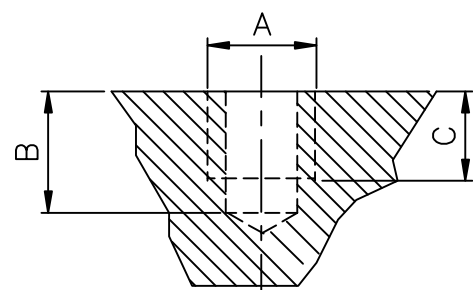
REV	DATE	ALTERED
07	11.06.01	CHD & APPD
ZONE		DRG.UPDATED AND REDRAWN.
DCN: SB: 1298		

CAUTION: The information on this document is the property of BHARAT HEAVY ELECTRICALS LTD. It must not be used directly or indirectly in any way detrimental to the interest of the company.

Size A2


$$\begin{array}{rcl} 93 \text{ H8} & = & 93 \begin{array}{l} +0.054 \\ 0.0 \end{array} \\ 25 \text{ H7} & = & 25 \begin{array}{l} +0.021 \\ 0.0 \end{array} \\ 16.5 \text{ H8} & = & 16.5 \begin{array}{l} +0.027 \\ 0.0 \end{array} \end{array}$$


	842020139700	842020139701
M	M 33X2	M 33X2
N	M 33X2	—
O	M 33X2	—
P	—	M 33X2




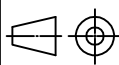
DETAIL C

NOTES:

01. FOR CASTING DRAWING REFER DRG.NO: 2-20-201-00142, AFTER FINAL MACHINING SHARP CORNERS ARE TO BE ROUNDED OFF
02. SPOT FACE  $\varnothing 50$  AT THESE LOCATIONS TO MAINTAIN 5MM IF THICKNESS IS MORE THAN 5MM.
03. FOR QUALITY REQUIREMENTS REFER APPLICABLE LATEST QUALITY PROCEDURES. REFER TABLE FOR M,N, O&P VALDES.

REV	DATE	ALTERED
04	24.08.09	CHD & APPD
ZONE	M6 HOLES IN THE REGION B-5 INCREASED FROM 12 TO 13 Nos.	
DCN: 800909/5009626		

**CAUTION:** The information on this document is the property of BHARAT HEAVY ELECTRICALS LTD. It must not be used directly or indirectly in any way detrimental to the interest of the company.

CASTING		16-024-016	ALUMINIUM LM9WP			4.760		2-20-201-00142	1
No OFF	DESCRIPTION	MATL CODE	MATL SPECN	HEAT TREATMENT	SCRAP SORT	NET WT (kg)	GROSS WT (kg)	DRAWING No	ITEM No
TYPE OF PRODUCT OR NAME OF CUSTOMER/PROJECT									
 <b>BHARAT HEAVY ELECTRICALS LTD.,</b> UNIT: HIGH PRESSURE BOILER PLANT. TIRUCHIRAPALLI -620014.					DRN	NAME <i>V. Arumugham.</i>	SIGN	DATE	NO.OF VAR.
					CHD	<i>K. Pritharan.</i>			
					APPD	<i>P. Natarajan.</i>			
					DEPT SB			SCALE NTS	WEIGHT (KG). 4.760
CODE 330									
TITLE LIMIT SWITCH MOUNT				CARD CODE U 01	DRAWING NO. 2-20-201-00357				REV 04